



Premium Edition Version 7.0 for Palm OS Handhelds and Smartphones

User Documentation



Bachmann Software

270 Sparta Avenue
Suite 104, PMB 318
Sparta, NJ 07871
United States

PrintBoy copyright 1999-2006 by Bachmann Software and Services, LLC and its licensors. All rights reserved. Palm OS and PalmOne are registered trademarks, and PocketPC are trademarks of Microsoft, Inc. All other products, services and company names are trademarks, registered trademarks or services marks of their respective owners.

This documentation may be printed by the licensee for personal use. No part of this documentation may be reproduced or transmitted in any form by any means, electronic or mechanical, including photocopying, recording, or any information storage and retrieval system, without permission in writing from Bachmann Software and Services, LLC.

Bachmann Software and Services, PrintBoy, the PrintBoy logo, Bachmann Print Manager and the Bachmann Software and Services logo are trademarks of Bachmann Software and Services.

All software and documentation are subject to the license agreement found at the beginning of this document.

How to Contact Bachmann Software:

Bachmann Software and Services, LLC
270 Sparta Ave, Suite 104318
Sparta, NJ 07871
USA

To purchase licenses for PrintBoy or other Bachmann Software products, or if you have general product licensing questions, please contact us as follows:

Voice: (973) 729-9427

Fax: (973) 729-8553

e-mail: sales@bachmannsoftware.com

Or visit us on the World Wide Web: <http://www.bachmannsoftware.com>

For Technical Support,

Please visit us on the Web at www.bachmannsoftware.com/support.htm for the most recent software updates, answers to Frequently Asked Questions, and instructions for how to submit technical support questions.

Bachmann PrintBoy License Agreement

PLEASE READ THIS LICENSE CAREFULLY BEFORE USING THE SOFTWARE. BY USING THE SOFTWARE YOU ARE AGREEING TO BE BOUND BY THE TERMS OF THIS LICENSE. IF YOU DO NOT AGREE TO THE TERMS OF THIS AGREEMENT, PROMPTLY DESTROY ALL COPIES OF THE SOFTWARE.

1. License. The application, demonstration, system and other software accompanying this License, whether on disk, read only memory or on any other media (the “Software”), the related documentation and fonts are licensed to you by Bachmann Software and Services and its Licensors. This license allows you to use the Software on a single computer. You may use a copy of the software on a home or portable computer as long as the extra copy is never loaded at the same time the software is loaded on the primary computer on which you use the Software. You may make one copy of the Software in machine readable form for backup purposes. You also transfer all your license rights in the Software, the backup copy of the Software, the related documentation and a copy of this License to another party, provided the other party reads and agrees to accept the terms and conditions of this License.
2. Restrictions. The Software contains copyrighted material, trade secrets, and other proprietary material. In order to protect them, and except as permitted by applicable legislation, you may not decompile, reverse engineer, disassemble or otherwise reduce the Software to a human perceivable form. You may not modify, rent, lease, loan, distribute or create derivative works based upon the software in whole or in part. You may use the Software to develop freeware or shareware.
3. You may not use the Software to create a product which competes in any way with the Software.
4. Software end users may not use the “run-time modules” or any other Software components for development purposes.
5. You agree to indemnify, hold harmless and defend Bachmann Software and Services, LLC and its suppliers from and against any and all claims or lawsuits including attorneys fees that arise or result from the use and distribution of your product. If any of the conditions set forth in paragraphs 1 through 4 are breached, such breach shall constitute an unlawful use of the Software, and you shall be prosecuted to the full extent of the law. Furthermore, you shall be liable to Bachmann Software and Services, LLC for all damages caused by such breach and unlawful use of the software, including attorney’s fees and costs incurred in any action, lawsuit or claim brought or filed to redress the breach of this agreement.

LIMITED WARRANTY

LIMITED WARRANTY. Bachmann Software and Services, LLC warrants that the Software will perform substantially in accordance with the accompanying written materials for a period of thirty (30) days from the date of receipt.

CUSTOMER REMEDIES. Bachmann Software and Services, LLC and its suppliers’ entire liability and your exclusive remedy in the event of a defect in materials and workmanship of the Software under normal use during the Limited Warranty period shall be, at Bachmann Software and Services, LLC’s option, either a) return of the price paid by you in exchange for all Software contents including written materials; or b) repair or replacement of the Software that does not meet Bachmann Software and Services, LLC’s Limited Warranty and which is returned to Bachmann Software and Services, LLC with a copy of your receipt. This Limited Warranty is void if failure of the Software has resulted from accident, abuse or misapplication. Any replacement Software will be warranted for the remainder of the original warranty period or ten (10) days, whichever is longer.

NO OTHER WARRANTIES. There are no other warranties to the maximum extent permitted by applicable law. Bachmann Software and Services, LLC and its suppliers disclaim all other warranties, either express or implied, including but not limited to implied warranties of merchantability and fitness for a particular purpose, with regard to the Software, the accompanying written materials and any accompanying hardware.

NO LIABILITIES FOR CONSEQUENTIAL OR INCIDENTAL DAMAGES. To the maximum extent permitted by law, in no event shall Bachmann Software and Services, LLC or its suppliers be liable for any damages whatsoever (including without limitation, damages for loss of business profits, business interruption, loss of business information, or any other pecuniary loss) arising out of the use of or inability to use this Bachmann Software and Services, LLC product, even if Bachmann Software and Services, LLC has been advised of the possibility of such damages.

BACHMANN PRINTBOY LICENSE AGREEMENT	3
1. WHAT IS PRINTBOY?	6
2.0 GETTING STARTED WITH PRINTBOY	7
2.1 Pre-Installation Checklist:.....	7
2.2 Installing PrintBoy:	7
3. CONFIGURING YOUR PRINTER	9
3.1. Choosing Your Default Printer	9
3.2. Choosing a Printer Driver	10
3.3. Choosing a Communications Method	10
3.4. Choosing a Paper Size.....	11
4. PRINTING FROM PRINTBOY	12
4.1. The PrintBoy Main Screen	12
4.2. Printing a File	12
4.3. File Printing Options	Error! Bookmark not defined.
4.4. Printing Email.....	14
5. TECHNICAL SUPPORT	17

1. What Is PrintBoy?

PrintBoy is a software program that enables you to print your documents and other information, from your Treo smartphone or other Palm OS handheld directly to your mobile, desktop or network printer.

PrintBoy can connect to your printer through an infrared, Bluetooth, serial, or network/wireless (WiFi) connection. If your printer does not have one of these connections, wireless print adapters may be purchased through the Bachmann Software web site, or through one of our partners.

PrintBoy version 7.0 is compatible with all Palm OS handhelds and smartphones, and prints the following kinds of files and data:

- Word (native .doc files, Docs To Go, QuickWord, WordSmith, and FreeWrite file formats)
- Excel (Docs To Go and QuickSheet file formats)
- PowerPoint (Docs To Go, QuickPoint file formats)
- Adobe PDF files (native .pdf file format)
- Databases (SmartList To Go, HandBase, MobileDB, Student 4.0)
- Clipboard Data (copied from another Palm program)
- Palm Memos
- Palm Contacts
- Palm Calendar
- Palm Tasks
- Text and Scribble Notes
- Custom Data (printed through the PrintBoy Software Development Kit)

PrintBoy does not need a personal computer to print. Instead, PrintBoy comes with special print drivers that enable your smartphone or handheld device to print directly to virtually any printer.

2.0 Getting Started with PrintBoy

2.1 Pre-Installation Checklist:

If you have a Treo smartphone or Palm handheld you can use PrintBoy.

To install and use PrintBoy you need the following:

- A Palm OS compatible handheld or smartphone
- A Personal Computer and HotSync cradle or cable connection

To print using an **Infrared** connection you will need:

- A Printer with any of the following:
 - A built-in infrared (IR) port on your printer
 - A Bachmann InfraReady adapter or InfraReady Plus adapter (purchasable online at <http://www.bachmannsoftware.com>)

To print using a **Bluetooth** connection you will need:

- A handheld or smartphone that has Bluetooth support
- A Printer with one of the following:
 - A built-in Bluetooth port on your printer
 - A Belkin Bluetooth Print Adapter (www.belkin.com)
 - Other compatible Bluetooth printer adapter

To print using a **Network** connection you will need:

- A handheld or smartphone that can make a successful network connection to the network that the printer is attached to. A Palm Treo or handheld can connect to a network in any number of ways, such as the following:
 - A GSM/GPRS/CDMA wireless data connection from a smartphone
 - A “Wi-Fi” or 802.11 connection, either built-in on your handheld or through an add-on Wi-Fi adapter or card
- A printer that is attached to the network and which has its own IP address. Most modern laser printers either come with an Ethernet port or can be inexpensively augmented with an add-on Ethernet module or Ethernet-capable Print Server appliance such as the HP JetDirect appliance.

Important! How you connect to your networked printer is dependent on the hardware being used, and the configuration of both your handheld and the network hosting the printer. To configure your handheld to connect to your networked printer, please be sure to consult the documentation that came with your handheld adapter hardware, your printer, and also please be sure to consult with your network administrator.

2.2 Installing PrintBoy:

PrintBoy is easy to install, just follow these instructions:

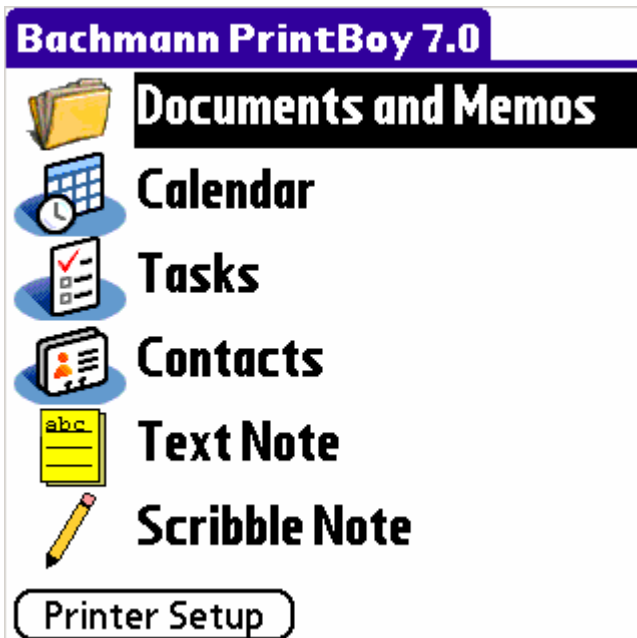
Step 1: Download or copy the installation file into a folder of your choice on your desktop computer

Step 2: Run the PrintBoySetup program from this folder

Step 3: Follow the step by step instructions on your computer screen from the PrintBoy installation program. This will install all the necessary PrintBoy files to your handheld device. Be sure to watch for any additional prompts on the screen of your handheld.

When the installer prompts you perform a HotSync between your desktop and your handheld, please follow the instructions and do a HotSync to transfer the PrintBoy program to your handheld.

That's it! PrintBoy and the PrintBoy run time engine including the printer drivers you selected are now installed on your handheld. If you go to your Palm's Applications screen and choose the PrintBoy icon, you should see the PrintBoy application running on your handheld screen, as shown below:

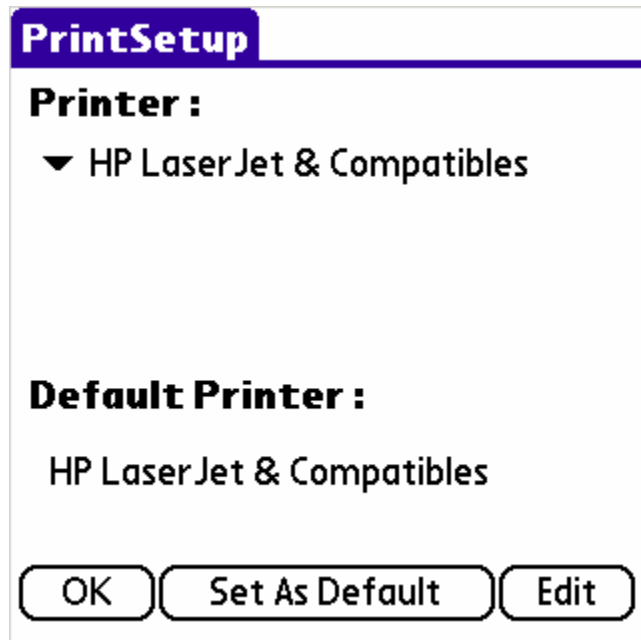


3. Configuring Your Printer

Once PrintBoy has been successfully installed, you need to choose your printer and tell PrintBoy how you plan to connect to the printer from your handheld. PrintBoy comes with a Print Setup utility that runs on your handheld to make this process easy.

You can run Print Setup from within the PrintBoy main screen by selecting the Printer Setup button.

Print Setup (shown below) allows you to choose your default printer, as well as configure your printer's communications, default paper size, margins, and other settings



3.1. Choosing Your Default Printer

Choosing your default printer saves you time, so that you won't have to set up your printer every time you want to print. Just like you do on your Windows desktop or laptop, PrintBoy allows you to choose a default printer that it will automatically use for each print job.

Perform the following steps to select your default printer.

- Run PrintBoy
 - Choose Printer Setup
 - Tap on the "Printer" drop-down list to see a list of all available printer drivers (see "Choosing a Printer Driver" below)
 - Tap on the driver that most closely describes your printer
 - Tap on the Edit button to choose communication and page size options for your printer.
-
- Tap on the OK button to save your settings.

- Tap on the Set As Default button to choose this printer driver as the default one to use with PrintBoy

Note that you can always change your driver selection at any time by simply going back to the Tools -> Printer Setup menu.

3.2. Choosing a Printer Driver

Because PrintBoy is powered by the PrintBoy Run Time Print Engine, you can print from your handheld to almost any desktop, networked or mobile printer. PrintBoy comes with many specialized print drivers to help your handheld create the best output possible for your printer.

Important! For a complete, updated list of all compatible printers, please visit our web site at:

<http://www.bachmannsoftware.com/support.htm>

You should also consult the user guide that came with your printer and see if it talks about compatibility with other printers. For example, a great many printers support (or “emulate”) Hewlett-Packard’s “Printer Control Language” (also known as PCL). If this is the case, you can try to use the HP & Compatibles driver.

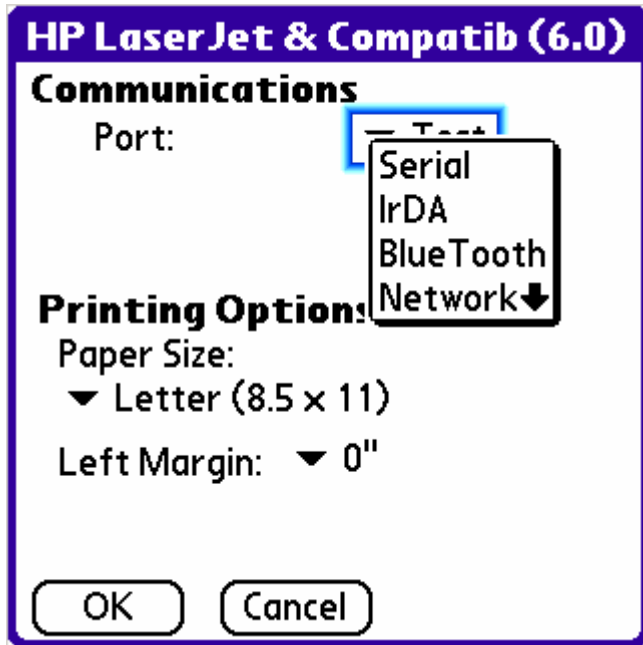
If your printer is not listed in the Compatibility Matrix, and your printer manual does not describe any emulation for a printer that is in the Matrix, as a fallback you will almost certainly be able to achieve basic printing by choosing the “Generic” printer driver.

In Print Setup, tap on the Printers drop-down list to see a list of all printer drivers which are installed on your handheld. When you have selected a driver, tap the Next button to proceed with the next step.

3.3. Choosing a Communications Method

The PrintBoy suite of printer drivers come pre-configured with the most likely communications settings. Depending on your driver and your intended printing connectivity (infrared, Bluetooth, network or serial), you may need to adjust these settings.

The Communications option in Print Setup makes changing these settings easy and consistent for all printer drivers, as shown below.



Tap on the drop-down list to choose from among your connection options. Note that some of the connection types require additional Communication Settings which you will need to complete.

When you are done selecting a communications type, tap the Next button to proceed with the next step.

3.4. Choosing a Paper Size

By default your printer driver will choose a paper size which is most common for the target printer. However you may change this setting to match the paper type you will be using with your printer.

To change the paper type, tap the drop down list and select the one that matches your intended paper.

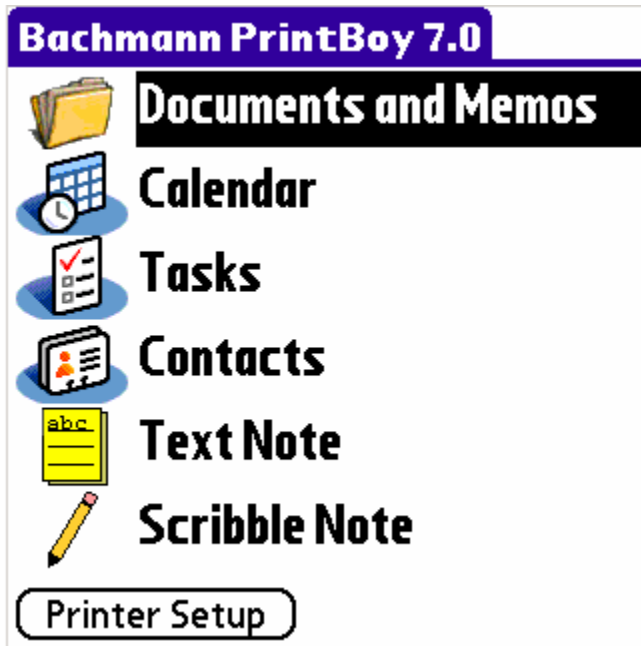
You can also choose a left margin from the associated drop-down list.

4. Printing from PrintBoy

This section describes how to print your documents, files and other kinds of data using PrintBoy

4.1. The PrintBoy Main Screen

The PrintBoy Main Screen, pictured below, lets you choose what kind of data you want to print, and helps you navigates through the documents and files stored on your handheld.

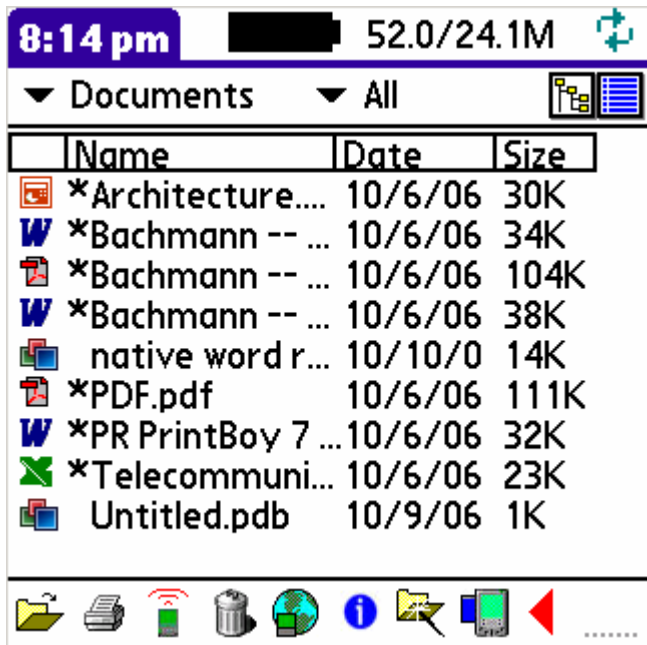


The PrintBoy Main Screen

If you are using a Treo or other Palm handheld that has a “5-way Navigation Button” you can use this hardware button to navigate up and down the list, and select the kind of data you want to print. You can also use your stylus to tap on the selection you want.

4.2. Printing a Document or Memo

To print a document or memo stored on your handheld or expansion card, choose the Documents and Memos selection from the main PrintBoy screen. This will bring up the PrintBoy File Explorer as shown below:



PrintBoy screen displays all of the documents, spreadsheets, PDF and PowerPoint files that it found on your Palm handheld or memory expansion card. The icon to the left of each file indicates what kind of file it is. Also an asterisk (*) next to the filename indicates that the file is stored on the memory expansion card.

Note: PrintBoy will list any file which is of a supported file type. If you do not see your file listed, check to see what file format it is. You may need to save it in a different file format which will be supported by PrintBoy.

Use the dropdown controls at the top of the screen to change the default "All" selection to instead view only documents on RAM or only documents on expansion card. Similarly you can explore Memos or other file types if you wish by changing the Documents filter to another file type.

About PrintBoy File Explorer and FilePoint

You will note that there are many other icons and menus available on this screen. The PrintBoy File Explorer is actually a "lite" version of Bachmann's full-featured FilePoint program. FilePoint has many many features which help you work with programs and files on your handheld. Filepoint lets you connect wirelessly to your desktop and retrieve documents to your handheld, launch applications directly from your memory expansion card, save space by moving files to and from your memory expansion card, organize your files in folders for easy access, and much more. You can explore FilePoint's full functionality during the free trial period, after which you may purchase FilePoint at www.bachmannsoftware.com if you wish. (The PrintBoy File Explorer functionality will continue to work even if you do not choose to purchase FilePoint).

To begin printing a file to your default printer, first make sure you are prepared to connect to the target printer as follows:

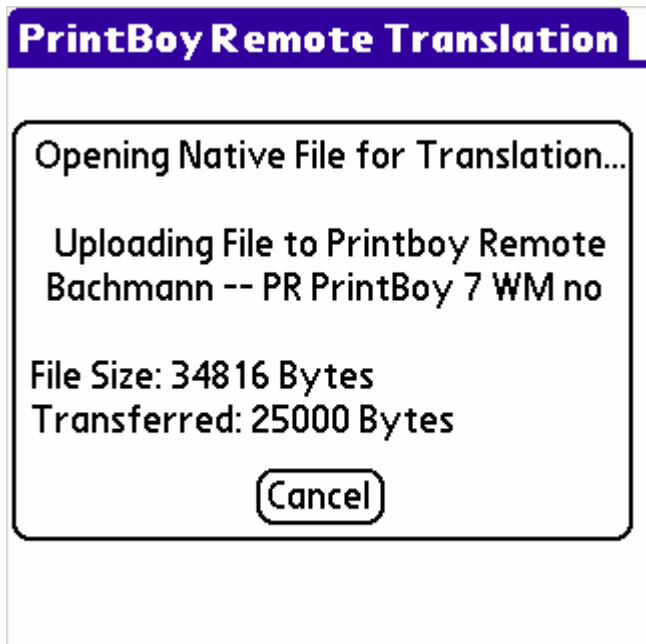
- If you are using infrared, make sure the infrared port of your handheld is facing the infrared port on your printer, and is between 1 and 3 feet in distance from the printer.

- If you are using Bluetooth, make sure that your handheld is in range of the Bluetooth printer, and that you will be able to pair your handheld with your printer.
- If you are using Wi-Fi, make sure that Wi-Fi is on and connected on your handheld.
- If you are using a wireless data connection, make sure your phone is on and data service is enabled.

Once you've prepared your connection, tap on the file you wish to print. PrintBoy will now evaluate the file type of your selected file and determine the best way to print it, as follows:

If your file is in Palm "pdb" format, such as a Documents To Go file or a memo, PrintBoy will immediately proceed to print your file to the designated printer.

If your file is a native Microsoft Word (.doc), or a native Adobe (.pdf) file, PrintBoy will first connect wirelessly to the PrintBoy Remote conversion service to convert your file to a printable format. A sample screenshot of this process is pictured below:



(Note that if you are using a Treo Smartphone you must have wireless data access to the internet in order to perform this step).

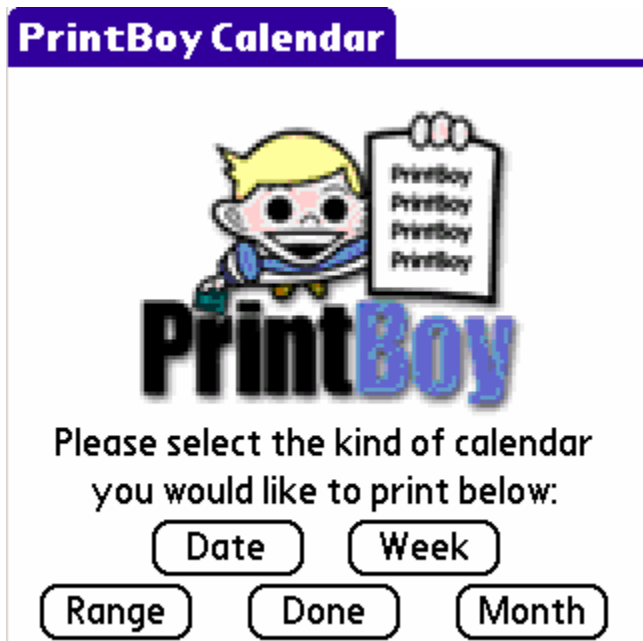
The remote document conversion process is very quick, depending of course on the size of your file and the speed of your connection.

Once any necessary file format conversions are complete, your document will be then printed to the designated printer.

To return to the PrintBoy main screen, tap the red arrow on the toolbar at the bottom of the screen.

4.4. Printing Palm Calendar Appointments

To print your Calendar Appointments, tap on the Calendar item on the main PrintBoy screen. The PrintBoy Calendar options will appear as shown below:



PrintBoy DateBook lets you view your scheduled appointments and events for a single day, multiple days, a week at a time, or in the familiar “month at a glance” monthly calendar format.

The PrintBoy DateBook screen lets you choose from four buttons that control how your appointments will be printed out.

“Date”: Lets you choose a single date (the default is “today”) for which to print your appointments.

“Range”: Lets you choose a start date and end date. Your appointments are printed for each day in the range

“Week” Lets you choose a week (the default is the current week) for which to print your appointments. Your appointments are printed for each day in the week.

“Month” Lets you choose a month (the default is the current month) for which to print your appointments.

Note: If your configured print driver supports enhanced graphics, (For example, HP LaserJet and Compatibles, HP DeskJet and Compatibles, HP Truepage, Epson Truepage and Canon TruePage, PrintBoy will print a graphical “Month at a glance” month calendar. If your configured print driver does not support enhanced graphics, your appointments will be printed as a range of days, just the same as if you had chosen “Range” or “Week”.

Note that PrintBoy will also work with 3rd party Datebook enhancement such as DateBk, as long as those programs continue to use the standard Palm DateBook database format

4.5. Printing Palm Tasks

PrintBoy’s Palm Tasks lets you print your To Do’s from the built in Palm Tasks “To Do List” program. PrintBoy will automatically sort your printout by priority and due date, and even include

a handy “check box” in the left hand column so you can check tasks as completed as you work through your day.



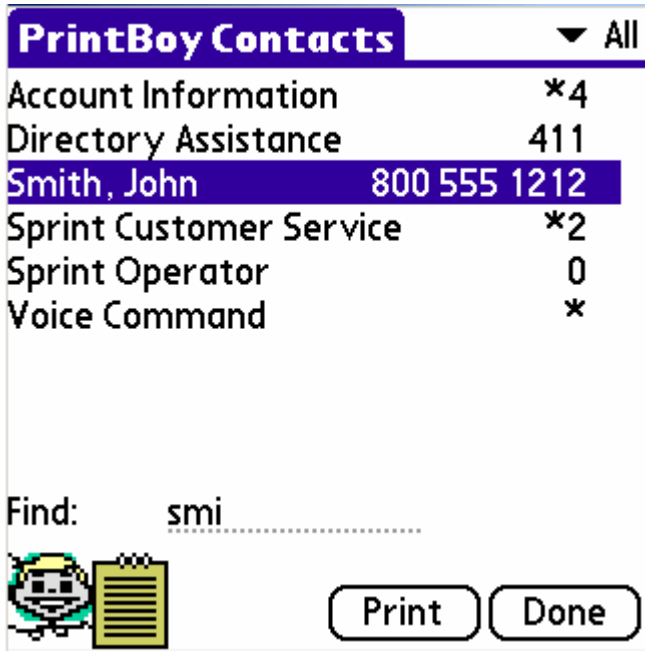
You can choose how to print your to do's by selecting a category from the top right corner of the screen. These are the same categories found in the Palm Tasks application. If you select the “All” category, all of your to do's will be printed. Selecting a different category will print only to do's that have been stored in that category.

When you have selected your category, simply tap the Print button. Your To Do's are printed sorted by ascending priority, and descending due date within each priority. If a To Do has an associated Note, the note is automatically printed along with the To Do.

You may print several categories in succession if you choose. When you are done printing, tap the Done button to return to the PrintBoy main screen.

4.5. Printing Palm Contacts

PrintBoy's Palm Contacts lets you print any Address Card from your Address Book. The PrintBoy Address screen lists all of your Palm addresses by category, just like the built-in Address List application. Use the category dropdown list in the upper right corner of the screen, along with the vertical scrolling feature, to locate the address you wish to print. As an alternative, you can use the Find feature to jump to the address by entering the first few letters in Graffiti.

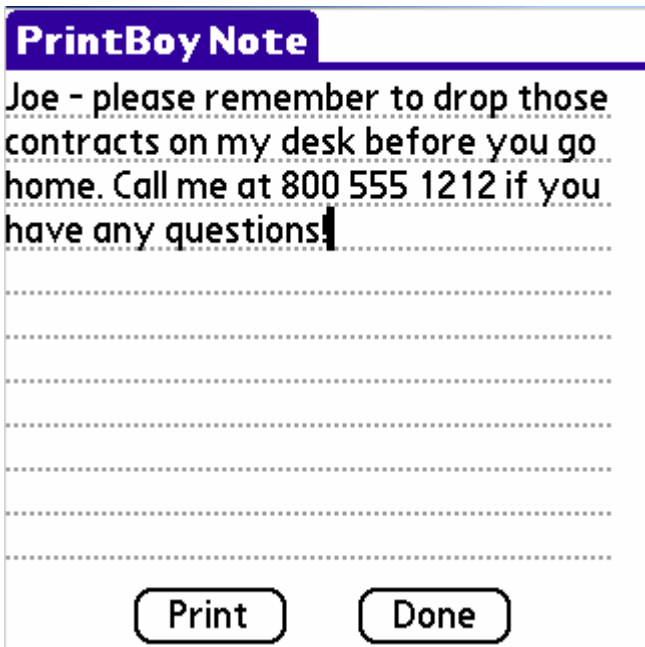


Once you've found the address, simply tap on it to select it, then tap the Print button.

Note that PrintBoy will also work with 3rd party Address List enhancements such as Action Names or Address Pro, since those applications continue to use the standard Palm Address database. your To Do's from the built in Palm Tasks "To Do List" program. PrintBoy will automatically sort your printout by priority and due date, and even include

4.6. Printing Text Notes

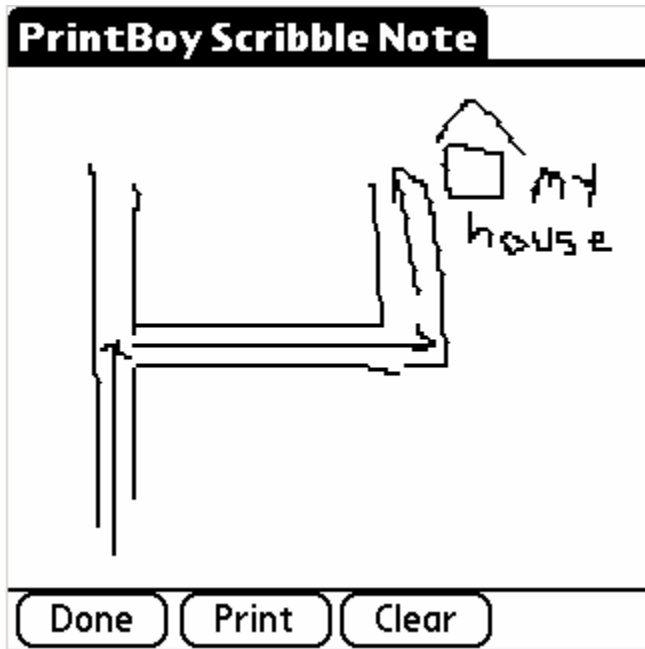
PrintBoy Text Note (shown below) enables you to take a text only note by using the Graffiti Palm Language or the device keyboard.



When you choose Text Note from the PrintBoy main screen you will be given a blank text notepad for you to jot down a quick note. When you are finished taking your note you can or print it or it will stay in memory until you create a new text note. A great use for this feature might be a phone number that you need to remember for a short period of time, or a quick printed note for a coworker.

4.6. Printing “Scribble” Notes

PrintBoy Scribble Notes enables you to take a note by scribbling on your Palm handheld. You can now print it to paper or wait until later. Your scribble note is saved until you choose to create another scribble note.

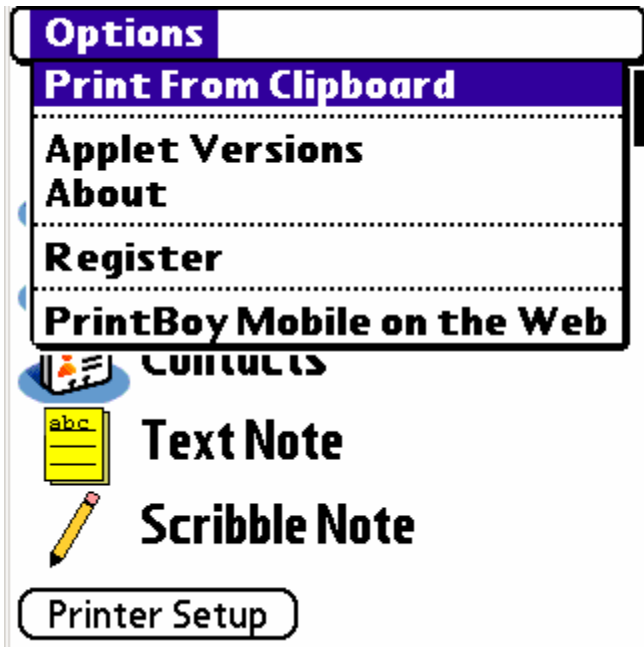


When you choose Scribble Note from the PrintBoy main screen you will be given a blank notepad for you to sketch anything you want with your stylus. When you are finished drawing you can or print it or it will stay in memory until you create a new scribble note. A great use for this feature might be a quick drawing of directions to your house, or maybe you want to sketch out that great new invention of yours on something more modern than a paper napkin!

4.7. Printing from the Palm ClipBoard

Although PrintBoy has built in support for the most popular programs and file types on your Palm, PrintBoy can't possibly support every program in the world. That's why there is PrintBoy Clipboard. Just about every Palm program can copy its data to the ClipBoard. From there, you can easily use PrintBoy's ClipBoard printing feature to print your data!

To print from the clipboard, first select the data you want to print and copy it to the clipboard (typically this is done by choosing Edit | Copy from the program's menu). Then run PrintBoy and from the PrintBoy Options menu choose Print From Clipboard, as shown below:



The PrintBoy Clipboard screen will now appear (shown below).



Now you can print your data by tapping the Print button.

A great use of this feature is to be able to print an e-mail message from the Palm VersaMail program. Due to technical restrictions it remains impossible for PrintBoy to directly access VersaMail's emails and print them, so PrintBoy's Clipboard feature is an excellent way to still be able to print your email messages!

5. Technical Support

If you have a question that is not answered in this manual, or you are experiencing a problem using the software, please visit our online Support area at www.bachmannsoftware.com.

On our support page you will find information on how to subscribe to our active PrintBoy user group, as well as answers to Frequently Asked Questions (FAQ's). If these information sources do not provide the information you need, please e-mail your support question to support@bachmannsoftware.com. We make every effort to reply to support questions within one business day.

If you have determined there may be a problem with a specific document you wish to print, the best thing to do is to email support@bachmannsoftware.com with the document you are having trouble. We can then quickly determine if there is anything special about the file format which is causing problems.

When e-mail us for technical support, we appreciate it if you provide us with the following information:

- Your printer manufacturer and model number
- The default printer driver you are using
- Communications settings (IR or serial, speed, etc)
- Which type of file you are printing
- Attached file you are having trouble with (optional)
- A detailed description of the problem

We thank you for your help and patience!

