



Premium Edition Version 7.0 for PocketPC / Windows Mobile

User Documentation



Bachmann Software

270 Sparta Avenue
Suite 104, PMB 318
Sparta, NJ 07871
United States

PrintBoy copyright 1999-2006 by Bachmann Software and Services, LLC and its licensors. All rights reserved. Windows Mobile and PocketPC OS are registered trademarks, and PocketPC are trademarks of Microsoft, Inc. All other products, services and company names are trademarks, registered trademarks or services marks of their respective owners.

This documentation may be printed by the licensee for personal use. No part of this documentation may be reproduced or transmitted in any form by any means, electronic or mechanical, including photocopying, recording, or any information storage and retrieval system, without permission in writing from Bachmann Software and Services, LLC.

Bachmann Software and Services, PrintBoy, the PrintBoy logo, Bachmann Print Manager and the Bachmann Software and Services logo are trademarks of Bachmann Software and Services.

All software and documentation are subject to the license agreement found at the beginning of this document.

How to Contact Bachmann Software:

Bachmann Software and Services, LLC
270 Sparta Ave, Suite 104318
Sparta, NJ 07871
USA

To purchase licenses for PrintBoy or other Bachmann Software products, or if you have general product licensing questions, please contact us as follows:

Voice: (973) 729-9427

Fax: (973) 729-8553

e-mail: sales@bachmannsoftware.com

Or visit us on the World Wide Web: <http://www.bachmannsoftware.com>

For Technical Support,

Please visit us on the Web at www.bachmannsoftware.com/support.htm for the most recent software updates, answers to Frequently Asked Questions, and instructions for how to submit technical support questions.

Bachmann PrintBoy License Agreement

PLEASE READ THIS LICENSE CAREFULLY BEFORE USING THE SOFTWARE. BY USING THE SOFTWARE YOU ARE AGREEING TO BE BOUND BY THE TERMS OF THIS LICENSE. IF YOU DO NOT AGREE TO THE TERMS OF THIS AGREEMENT, PROMPTLY DESTROY ALL COPIES OF THE SOFTWARE.

1. License. The application, demonstration, system and other software accompanying this License, whether on disk, read only memory or on any other media (the “Software”), the related documentation and fonts are licensed to you by Bachmann Software and Services and its Licensors. This license allows you to use the Software on a single computer. You may use a copy of the software on a home or portable computer as long as the extra copy is never loaded at the same time the software is loaded on the primary computer on which you use the Software. You may make one copy of the Software in machine readable form for backup purposes. You also transfer all your license rights in the Software, the backup copy of the Software, the related documentation and a copy of this License to another party, provided the other party reads and agrees to accept the terms and conditions of this License.
2. Restrictions. The Software contains copyrighted material, trade secrets, and other proprietary material. In order to protect them, and except as permitted by applicable legislation, you may not decompile, reverse engineer, disassemble or otherwise reduce the Software to a human perceivable form. You may not modify, rent, lease, loan, distribute or create derivative works based upon the software in whole or in part. You may use the Software to develop freeware or shareware.
3. You may not use the Software to create a product which competes in any way with the Software.
4. Software end users may not use the “run-time modules” or any other Software components for development purposes.
5. You agree to indemnify, hold harmless and defend Bachmann Software and Services, LLC and its suppliers from and against any and all claims or lawsuits including attorneys fees that arise or result from the use and distribution of your product. If any of the conditions set forth in paragraphs 1 through 4 are breached, such breach shall constitute an unlawful use of the Software, and you shall be prosecuted to the full extent of the law. Furthermore, you shall be liable to Bachmann Software and Services, LLC for all damages caused by such breach and unlawful use of the software, including attorney’s fees and costs incurred in any action, lawsuit or claim brought or filed to redress the breach of this agreement.

LIMITED WARRANTY

LIMITED WARRANTY. Bachmann Software and Services, LLC warrants that the Software will perform substantially in accordance with the accompanying written materials for a period of thirty (30) days from the date of receipt.

CUSTOMER REMEDIES. Bachmann Software and Services, LLC and its suppliers’ entire liability and your exclusive remedy in the event of a defect in materials and workmanship of the Software under normal use during the Limited Warranty period shall be, at Bachmann Software and Services, LLC’s option, either a) return of the price paid by you in exchange for all Software contents including written materials; or b) repair or replacement of the Software that does not meet Bachmann Software and Services, LLC’s Limited Warranty and which is returned to Bachmann Software and Services, LLC with a copy of your receipt. This Limited Warranty is void if failure of the Software has resulted from accident, abuse or misapplication. Any replacement Software will be warranted for the remainder of the original warranty period or ten (10) days, whichever is longer.

NO OTHER WARRANTIES. There are no other warranties to the maximum extent permitted by applicable law. Bachmann Software and Services, LLC and its suppliers disclaim all other warranties, either express or implied, including but not limited to implied warranties of merchantability and fitness for a particular purpose, with regard to the Software, the accompanying written materials and any accompanying hardware.

NO LIABILITIES FOR CONSEQUENTIAL OR INCIDENTAL DAMAGES. To the maximum extent permitted by law, in no event shall Bachmann Software and Services, LLC or its suppliers be liable for any damages whatsoever (including without limitation, damages for loss of business profits, business interruption, loss of business information, or any other pecuniary loss) arising out of the use of or inability to use this Bachmann Software and Services, LLC product, even if Bachmann Software and Services, LLC has been advised of the possibility of such damages.

BACHMANN PRINTBOY LICENSE AGREEMENT	3
1. WHAT IS PRINTBOY?	6
2.0 GETTING STARTED WITH PRINTBOY	7
2.1 Pre-Installation Checklist:.....	7
2.2 Installing PrintBoy:	7
3. CONFIGURING YOUR PRINTER	9
3.1. Choosing Your Default Printer	9
3.2. Choosing a Printer Driver	10
3.3. Choosing a Communications Method	11
3.4. Choosing a Paper Size.....	11
4. PRINTING FROM PRINTBOY	13
4.1. The PrintBoy Main Screen	13
4.2. Printing a File	13
4.3. File Printing Options	15
4.4. Printing Email.....	15
5. TECHNICAL SUPPORT	17

1. What Is PrintBoy?

PrintBoy is a software program that enables you to print your documents and other information, from your Pocket PC or Windows Mobile smartphone or handheld directly to your mobile, desktop or network printer.

PrintBoy can connect to your printer through an infrared, Bluetooth, serial, or network/wireless (WiFi) connection. If your printer does not have one of these connections, wireless print adapters may be purchased through the Bachmann Software web site, or through one of our partners.

PrintBoy version 7.0 works with Pocket PC 2002, Pocket PC 2003 and Windows Mobile 5.0, and prints the following kinds of files and data:

Pocket PC 2002/2003:

- Pocket Word (converted and native .doc files)
- Pocket Excel (converted pxl files only)
- Text files (.txt)
- Adobe PDF files (.pdf)
- Pocket Outlook (Mail)
- Custom Data (through the PrintBoy SDK)

Windows Mobile 5.0

- Word Mobile (native .doc files)
- Text files (.txt)
- Adobe PDF files (.pdf)
- Pocket Outlook (Mail)
- Custom Data (through the PrintBoy SDK)

PrintBoy does not need a personal computer to print. Instead, PrintBoy comes with special print drivers that enable your smartphone or handheld device to print directly to virtually any printer.

2.0 Getting Started with PrintBoy

2.1 Pre-Installation Checklist:

If you have a handheld or smartphone running Pocket PC 2002, Pocket PC 2003, or Windows Mobile 5.0, you can use PrintBoy.

To install and use PrintBoy you need the following:

- A Pocket PC 2002, Pocket PC 2003 or Windows Mobile 5.0 compatible handheld or smartphone
- A Personal Computer and ActiveSync cradle or cable connection

To print using an **Infrared** connection you will need:

- A Printer with any of the following:
 - A built-in infrared (IR) port on your printer
 - A Bachmann InfraReady adapter or InfraReady Plus adapter (purchasable online at <http://www.bachmannsoftware.com>)

To print using a **Bluetooth** connection you will need:

- A handheld or smartphone that has Bluetooth support
- A Printer with one of the following:
 - A built-in Bluetooth port on your printer
 - A Belkin Bluetooth Print Adapter (www.belkin.com)
 - Other compatible Bluetooth printer adapter

To print using a **Network** connection you will need:

- A handheld or smartphone that can make a successful network connection to the network that the printer is attached to. A Pocket PC / Windows Mobile handheld can connect to a network in any number of ways, such as the following:
 - A GSM/GPRS/CDMA wireless data connection from a smartphone
 - A "Wi-Fi" or 802.11 connection, either built-in on your handheld or through an add-on Wi-Fi adapter or card
- A printer that is attached to the network and which has its own IP address. Most modern laser printers either come with an Ethernet port or can be inexpensively augmented with an add-on Ethernet module or Ethernet-capable Print Server appliance such as the HP JetDirect appliance.

Important! How you connect to your networked printer is dependent on the hardware being used, and the configuration of both your handheld and the network hosting the printer. To configure your handheld to connect to your networked printer, please be sure to consult the documentation that came with your handheld adapter hardware, your printer, and also please be sure to consult with your network administrator.

2.2 Installing PrintBoy:

PrintBoy is easy to install, just follow these instructions:

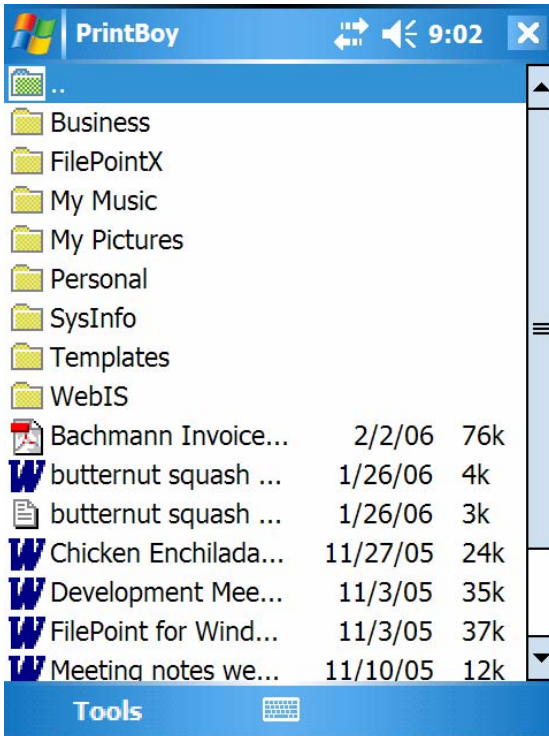
Step 1: Download or copy the installation file (PrintBoySetup7.exe) into a folder of your choice.

Step 2: Run the Setup program (PrintBoySetup7.exe) from this folder

Step 3: Follow the step by step instructions on your computer screen from the PrintBoy installation program. This will install all the necessary PrintBoy files to your handheld device. Be sure to watch for any additional prompts on the screen of your handheld.

If you are running Windows Mobile 5.0, you may see one or more prompts on your handheld asking if it is OK to install PrintBoy. You may safely answer Yes to these prompts.

That's it! PrintBoy and the PrintBoy run time engine are now installed on your handheld. If you tap on the Start Menu and choose PrintBoy, you should see the PrintBoy application on your handheld screen, as shown below:

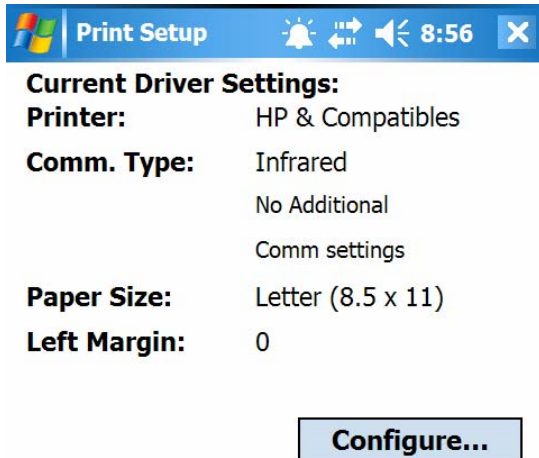


3. Configuring Your Printer

Once PrintBoy has been successfully installed, you need to choose your printer and how you plan to connect to the printer from your handheld. PrintBoy comes with a Print Setup utility that runs on your handheld to make this process easy.

You can run Print Setup from within the PrintBoy main screen by tapping the Tools menu, then choosing Printer Setup.

Print Setup (shown below) allows you to choose your default printer, as well as configure your printer's communications, default paper size, margins, and other settings



3.1. Choosing Your Default Printer

Choosing your default printer saves you time, so that you won't have to set up your printer every time you want to print. PrintBoy allows you to choose a default printer that it will automatically use for each print job.

Perform the following steps to select your default printer.

- Run PrintBoy
- Tap on the Tools menu and choose Printer Setup
- Tap on the "Printer" drop-down list to see a list of all available printer drivers (see "Choosing a Printer Driver" below)
- Tap on the driver that most closely describes your printer
- Proceed to choose communication and page size options for your printer.
- Tap on the "Save" button to set that driver as the default one to use with PrintBoy

Note that you can always change your driver selection at any time by simply going back to the Tools -> Printer Setup menu.

3.2. Choosing a Printer Driver

Because PrintBoy is powered by the PrintBoy Run Time Print Engine, you can print from your handheld to almost any desktop, networked or mobile printer. PrintBoy comes with many specialized print drivers to help your handheld create the best output possible for your printer.

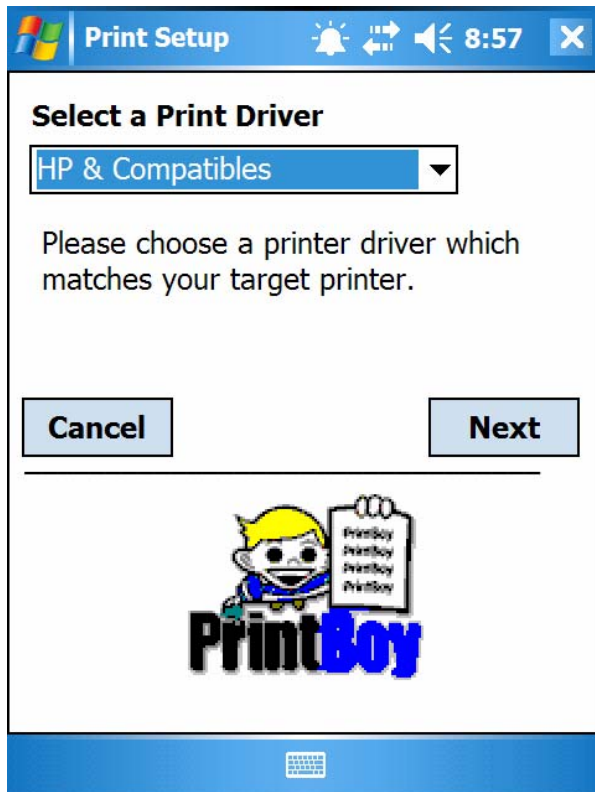
Important! For a complete, updated list of all compatible printers, please visit our web site at:

<http://www.bachmannsoftware.com/support.htm>

You should also consult the user guide that came with your printer and see if it talks about compatibility with other printers. For example, a great many printers support (or “emulate”) Hewlett-Packard’s “Printer Control Language” (also known as PCL). If this is the case, you can try to use the HP & Compatibles driver.

If your printer is not listed in the Compatibility Matrix, and your printer manual does not describe any emulation for a printer that is in the Matrix, as a fallback you will almost certainly be able to achieve basic printing by choosing the “Generic” printer driver.

To choose a printer driver, tap on the “Configure” button from the Print Setup main screen, and you will be presented with the Driver Selection screen, as shown below:

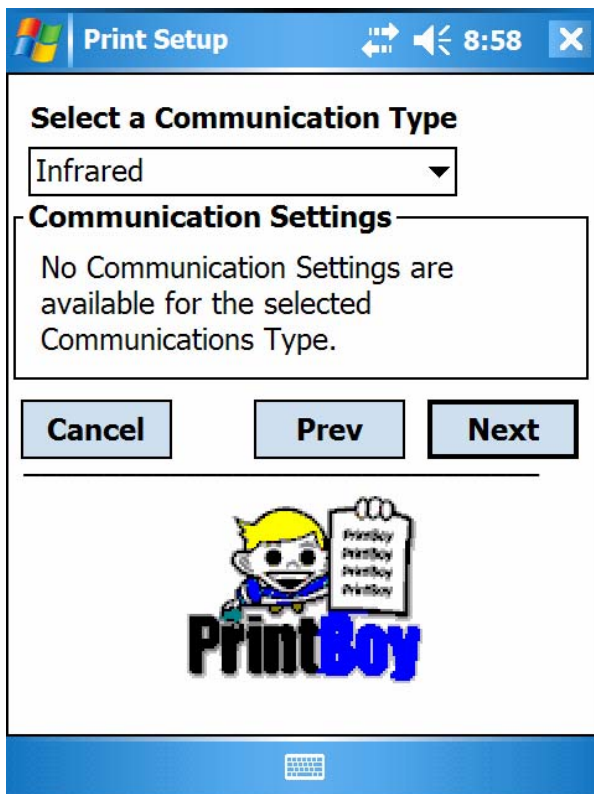


Tap on the drop-down list to see a list of all printer drivers which are installed on your handheld. When you have selected a driver, tap the Next button to proceed with the next step.

3.3. Choosing a Communications Method

The PrintBoy suite of printer drivers come pre-configured with the most likely communications settings. Depending on your driver and your intended printing connectivity (infrared, Bluetooth, network or serial), you may need to adjust these settings.

The Communications Type screen in Print Setup makes changing these settings easy and consistent for all printer drivers, as shown below.

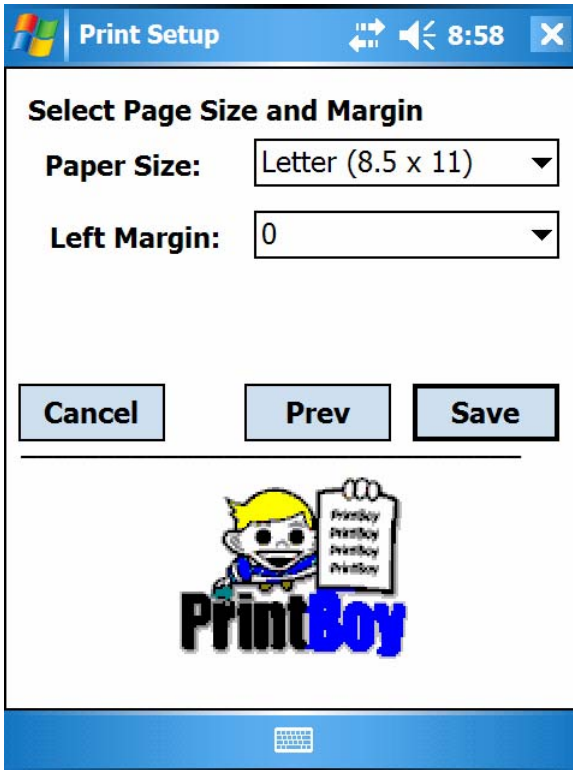


Tap on the drop-down list to choose from among your connection options. Note that some of the connection types require additional Communication Settings which you will need to complete.

When you are done selecting a communications type, tap the Next button to proceed with the next step.

3.4. Choosing a Paper Size

By default your printer driver will choose a paper size which is most common for the target printer. However you may change this setting to match the paper type you will be using with your printer.



To change the paper type, tap the drop down list and select the one that matches your intended paper.

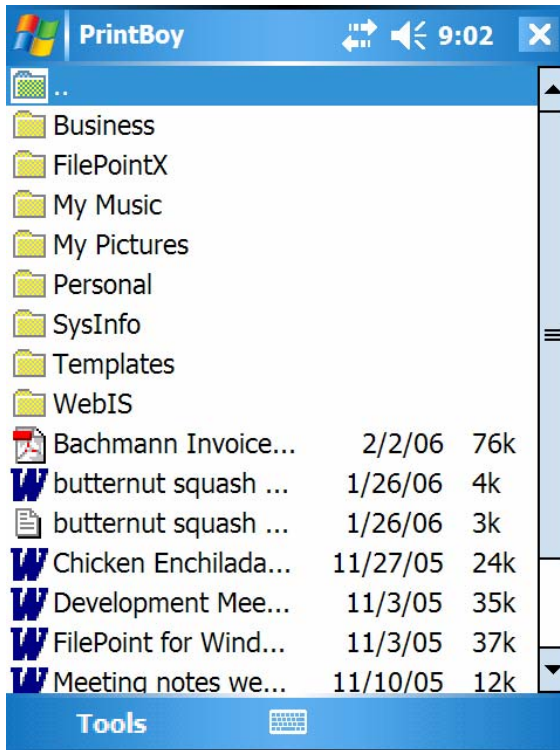
You can also choose a left margin from the associated drop-down list.

4. Printing from PrintBoy

This section describes how to print your documents, files and email with the PrintBoy application

4.1. The PrintBoy Main Screen

The PrintBoy Main Screen, pictured below, navigates through the documents and files stored on your handheld, and helps you find the file that you wish to print.



The PrintBoy Main Screen

By default, the PrintBoy screen displays the files and folders in the “My Documents” folder on your handheld. This is the default location where your documents are stored, so it will be most likely that the file you wish to print will be located here.

If your document is in another folder on your handheld, you can tap the “...” entry at the top of the folder list to navigate to any folder on your handheld. You can also navigate into any of the subfolders under “My Documents” by tapping on the folder name (ex.” Business”).

Note: PrintBoy will list any file which is of a supported file type. If you do not see your file listed, check to see what file format it is. You may need to save it in a different file format which will be supported by PrintBoy.

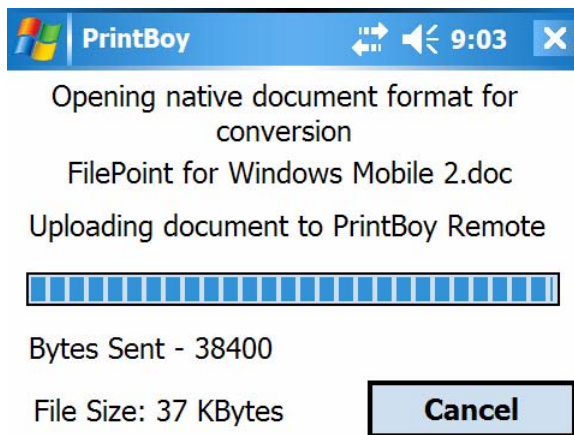
4.2. Printing a File

To begin printing a file to your default printer, first make sure you are prepared to connect to the target printer as follows:

- If you are using infrared, make sure the infrared port of your handheld is facing the infrared port on your printer, and is between 1 and 3 feet in distance from the printer.
- If you are using Bluetooth, make sure that your handheld is in range of the Bluetooth printer, and that you will be able to pair your handheld with your printer.
- If you are using Wi-Fi, make sure that Wi-Fi is on and connected on your handheld.
- If you are using a wireless data connection, make sure your phone is on and data service is enabled.

Once you've prepared your connection, tap on the file you wish to print. PrintBoy will now evaluate the file type of your selected file and determine the best way to print it, as follows:

If your file is a native Microsoft Word (.doc), or a native Adobe (.pdf) file, PrintBoy will connect to the PrintBoy Remote conversion service to convert your file to a printable format. A sample screenshot of this process is pictured below:



The conversion process is usually very quick, depending on the size of your file and the speed of your connection. If your file is a Pocket Word, Pocket Excel or Text File format, PrintBoy already can print it in its existing format, and will not need to convert.

Once any conversions are complete, you will be presented with the PrintBoy "Ready To Print" screen, below:

**File To Print**

\My Documents\FilePoint for
Windows Mobile 2.doc

Print Options

- Print File Name
- Print Page Numbers

Print



4.3. File Printing Options

You can choose two settings that affect the printed output for any printer driver: Page Header and Page Numbers. These settings are not persistent from across print jobs and thus need to be set for every job.

- Print File Name

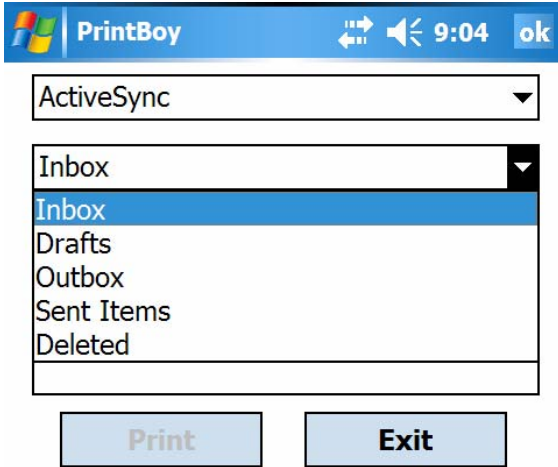
If the checkbox for Print File Name is set, a header will appear at the top of every page. The header should contain the File Name for the document as well as today's date. If the checkbox is not set, there should be no header printed.

- Print Page Numbers

If the checkbox for Page Numbers is set, an incremented page number will be printed at the bottom of every page. If the checkbox is not set, there should be no page number printed.

4.4. Printing Email

Besides documents and files, PrintBoy can also print your Pocket Outlook email. To print your mail, tap the Tools menu and choose the "Print Mail" option. You will be presented with the following screen:



Choose the source for your email (ex. ActiveSync), and then choose the mailbox folder where the e-mail you wish to print is located (by default this is the Inbox). A list of emails will appear in the list below the folder drop-down. Tap on the email you wish to print and tap the “Print” button. Your email will be printed to your default printer.

5. Technical Support

If you have a question that is not answered in this manual, or you are experiencing a problem using the software, please visit our online Support area at www.bachmannsoftware.com.

On our support page you will find information on how to subscribe to our active PrintBoy user group, as well as answers to Frequently Asked Questions (FAQ's). If these information sources do not provide the information you need, please e-mail your support question to support@bachmannsoftware.com. We make every effort to reply to support questions within one business day.

If you have determined there may be a problem with a specific document you wish to print, the best thing to do is to email support@bachmannsoftware.com with the document you are having trouble. We can then quickly determine if there is anything special about the file format which is causing problems.

When e-mail us for technical support, we appreciate it if you provide us with the following information:

- Your printer manufacturer and model number
- The default printer driver you are using
- Communications settings (IR or serial, speed, etc)
- Which type of file you are printing
- Attached file you are having trouble with (optional)
- A detailed description of the problem

We thank you for your help and patience!

